



Community/Technical Colleges → Pittsburg State University

What All Transfers Need to Know

2020-2021



Kansas Technology Center

Introduction—The Questions



- Why Build from Associate Degree to Bachelor Degree?
- Why Consider Pitt State?
- PSU Degree Options—What Degree Fits You Best?
- Degree Fit—Questions to Consider?
- Completion Degree—BAS in Technology
- What is a BAS in Technology?
- What is BAS in a Nutshell?
- Sample BAS in Technology program?
 - CAT ThinkBIGGER D&HE
 - Generic Program
- What are benefits of a BAS-T for:
 - community/technical college students?
- What are some recommendations in advising students?
- Frequently asked questions?
- Online Completion Alternative—BS in Workforce Development
- Other degree Options—AS to BSET; BSE and BSCTE
- Questions?

Why Build From Associate Degree to Bachelor Degree?

- Expand Career Options
 - Management
 - Education Career—Teaching
 - Entrepreneurial Opportunities
- Greater Upward Mobility
- More In-Depth Study
- Broaden Education
- Lifestyle Change
- Financial Rewards





Why Consider Pitt State?

- Motto: “By Doing Learn” – hands-on education
- Unique and nationally –recognized programs
- Development of sought-after graduates
- Facilities & equipment – Kansas Tech Center
- Award-winning, industry-experienced faculty
- Student support (e.g., Company Day)
- Active Student organizations
- Industry and alumni support
- Pitt State Culture –student success
- Many degree options



Kansas Technology Center



PSU Degree Options – Pick Best Fit

- **Completion Degrees—2+2**
 - On-campus, Face-to-Face (2+2 BAS in Tech)
 - Online (BS in Workforce Development)
- **Four Year Tech or Engineering Tech Degrees**
 - BS in Technology (BST)
 - BS in Engineering Technology (BSET)
- **Four-Year Education-Related Degrees**
 - BS in Education (BSE) – Tech & Engineering Ed
 - BS in Career & Technical Education

All are available to community college transfers



Degree Fit- Questions to Consider?

- Ready or necessary to enter job market, now?
 - Family obligations
 - Financial constraints
 - Personal Goals
 - Experience level
- Do I prefer and on-campus experience?
- Do I learn best in a lab/class environment or on my own online?
- Am I looking for hands-on, project-based learning experience?
- Am I a self-disciplined, independent learner with excellent time management skills?
- Have I earned an associate degree? AAS or AS?

Completion Degree Option #1

You: Have an AAS Degree and Want On-Campus

- **Bachelor of Applied Science in Technology (Associate Degree Emphasis)** – relates to:

- Automotive/Power Mechanics
- Collision Repair & Insurance Management
- Diesel & Heavy Equipment
- Manufacturing
- Plastics
- Mechanical
- Electronics
- Construction
- Environment & Safety
- Digital & Print Media
- Architectural Mfg. Management & Technology
- Technology Management (most general; generic)
- Hospitality Management
- Technical Teacher Education



What is the BAS in Technology?



The Bachelor of Applied Science in Technology degree is a **true 2+2 (2-year) completion degree** that provides **hands-on education with technical specialization** for a real-world job.

It includes **courses** in technology management, theory, logic, leadership, and business skills to broaden candidates' knowledge, **better prepare candidates for management opportunities**, and make them a more versatile employee.

Designed specifically to **provide upward career path for Associate of Applied Science degree recipients.**

Minors in Business are very common

BAS-T in a Nutshell: Eligibility?



- Students to be eligible must GRADUATE from an Associates of Applied Science program from an accredited institution.
- To be eligible, the student must have graduated with a minimum of a 2.5 GPA

BAS-T in a Nutshell: Graduate Requirements?

Student must complete:

- A minimum of 60 hours from four-year institution
- 45 hours of upper division courses
- A minimum of 30 hours at PSU
- A minimum of 120 credit hours are required for graduation (60 hours must be taken at a four year institution).
- A minimum of a 2.0 GPA in courses taken at the four-year institution level



Sample BAS in Technology Program: ThinkBIGGER D&HE



- 36-39 hrs. of General Education
- 40 hrs. of Technical Coursework from ThinkBIG (D&HE) Program
- 9 hrs. of Business
 - MGT 330 Management Organization & Behavior
 - MGT 430 Legal & Social Environ. of Business
 - MKTG 330 Basic Marketing
- 12 hrs. of Tech Management
 - TM 606 Industrial Supervision
 - EST 296 Industrial Safety
 - AT 690 Automotive Merchandising (or AT 691)
 - TM 500 Industrial Organization & Tech Management
- 15 hrs. Technical Support
 - MFGET 405 Quality Control
 - AT 399 Auto Prof Development
 - AT 699 Senior Seminar
 - AT 621 Advanced Diesel Electronics
 - AT 300 Internship
 - AT 400 Internship
- 9 hrs. Technical Elective
 - AT 630 On-highway Systems
 - AT 640 Off Highway Systems
 - AT 654 Advanced Hydraulics
 - AT 519 Fuels, Combustion, & Lubricants

Sample BAS in Technology Program: Technology Management (Any Tech Program)

- 36-39 hrs.. of General Education
 - Assume 24 hours from CC , e.g.:
 - English [3], Speech [3], Science w/lab [6-8], Math [6] Humanities [3]; Culture (e.g., Geography) [3]
 - PSU delivers 12 hours, e.g.:
 - GT/TM 300 Tech & Civ (3); PSYCH 575 Ind. & Org Psych (3); ENGL 301 Tech Writing (3); Accounting (3)
 - 36-40 hrs. of Tech Courses from CC
 - 9 hrs. of Business (PSU)
 - MGT 330 Management & Org. Behavior
 - MGT 430 Legal & Social Env. of Business
 - MKTG 330 Basic Marketing
 - 12 hrs. of Tech Management (PSU)
 - TM 606 Industrial Supervision
 - EST 603 Industrial Safety
 - TM 500 Industrial Org. & Tech Management
 - TM 530 Facility Maintenance & Management
 - 15 hrs.. Technical Support (PSU)
 - MFGET 405 Quality Control or sub
 - TM 501 Work Measurement & Eff.
 - TM 520 Leadership in Workplace
 - TM 300 Internship
 - TM 399 Prof Development & TM 699 Senior Seminar
- 12 hrs. Tech/ Electives
Electives (PSU)



Benefits of BAS-T for AAS Students and Graduates

- **AAS grads have opportunity for earning a relevant technical-related degree by taking:**

- Management courses related to technology
- Technical courses to round them out
- Advanced technical courses (provided foundation appropriate)
- Business support courses
- Some career-related general education (e.g., Technical Writing; Human Relations in Industrial Setting)
- Management-related internship in technology area



- **AAS degree is part of BAS-T degree name---**

Bachelor of Applied Science in Technology (Associate Degree Name)

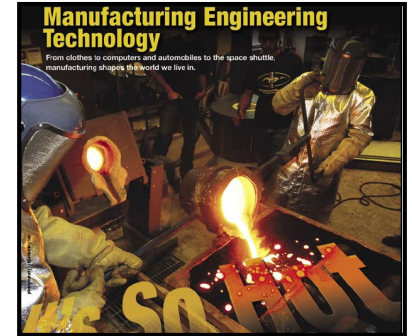
- Bachelor degree is identified with AAS degree
- Not just a generic sounding degree title

- **More career opportunities and upward mobility**

- **Flexibility--opportunity to tailor program toward career goals (e.g. industrial manager; industrial trainer)**

Advisement Recommendations: Community/ Technical Colleges

1. Determine AAS students **career goals**
2. Review **appropriate “Planning Guide Sheet”** with prospective BAS-T transfer
3. **Enroll students in course equivalencies for BAS-T University’s General education Requirements** (e.g., ACCTG 201 Financial Accounting)
4. **Provide accurate information** (e.g., calculus required for advanced ETECH classes)
5. **Encourage taking general education or support courses at AAS college that are typically taught by G.A.s at university** (e.g., College Algebra)
6. Encourage students to **complete AAS degree**
7. Encourage students to **obtain appropriate, related work experience**



Frequently Asked BAS-T Questions



Can I enroll in the BAS-T program if I have not completed my AAS program.

Answer: No, sorry ...only graduates of AAS programs are eligible for admission to BAS

[Note: Reverse articulation may be possible.]



Can I enroll in the BAS-T program if I have completed any Associate (e.g., AS) degree?

Answer: No, sorry ... a typical AS degree does not qualify you for the BAS-T program. The associate degree must be a technical or technology-based degree (e.g., approximately 40 credit hours of technical and supporting course work). An AS degree may articulate better with a BSET degree (e.g., Electronics)

Frequently Asked BAS-T Questions (cont-)



Will I be taking a lot more “technical courses” in my BAS-T program?

Answer: Most of your technical coursework comes from your AAS degree program. You will be taking courses in General Education, business courses, technical management courses, and . . . a limited number of technical courses to ‘round you out’, provide related technical information, and/or advanced (provided prerequisites met) or emerging technical knowledge in your field



What will my diploma say?

Answer: A Bachelor of Applied Science (with your technical specialization from your AAS degree in parenthesis)

Frequently Asked BAS-T Questions (cont-)



How do I know what courses to take?

Answer: See your advisor and work out your plan for the two years in community college, so you will get here, AS SOON AS POSSIBLE!! The key, when at PSU, is making sure that you get enough upper division courses. Also, once at PSU make sure that you immediately apply for a “Degree Audit”, which will tell you what you need to take to graduate.



For information about **transfer students**, see:

<https://admission.pittstate.edu/undergraduate/transfer-students.html>

For information about **transfer equivalency**, see:

<https://www.pittstate.edu/registrar/transfer-equivalency-guidelines.html>

For information about **degree audits, etc.**, see:

<https://www.pittstate.edu/registrar/degree-checking.html>

Frequently Asked BAS-T Questions (cont-)



What makes up the degree?

Answer:

- **General Education – 33 - 36 hours (typically, a minimum of 14+ hours of transferrable general education requirements are taken as part of AAS)**
- **Business support courses – 9 - 12 hours**
- **Technical / Professional – 76 hours**
 - **40 hours typically from AAS**
 - **Tech Organization & Leadership Courses – 12 hours**
 - **Tech Support, Related-Tech, and Elective courses – 24 hours**



Completion Degree Option #2

You Have an Associate degree and Are Workplace-Bound and Cannot Take Classes on a College Campus.

BS in Workforce Development (BSWD)

- The **ONLINE** alternative for the workplace-bound student with an associate degree
- PSU delivers 60 hours online for three areas of emphasis:
 - Supervision and Leadership
 - Human Resources
 - Hospitality Management



See website for all requirements for graduation:

<https://academics.pittstate.edu/academic-programs/technology-and-workforce-learning/workforce-development-major-online.html#undefined1>

Contact: Krissy Lewis, BSWD Coordinator, 620-235 4179 kllewis@pittstate.edu



Other On-Campus Degree Option: BSET

You have an Associate of Science degree in a technology-related field. Consider:

BS in Engineering Technology

Number of Math and Science courses in your AS degree are foundational to BSET degree.

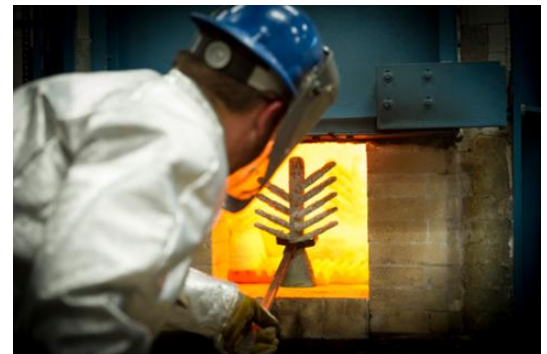
See: Department of Engineering Technology-

<https://www.pittstate.edu/etech/>

Contact: Greg Murray, ETECH Chairman,

620-235 4384

gmurray@pittstate.edu



Other On-Campus Degree Option: BSE

You have a technology-related associate degree and you want to teach. Consider:

BSE in Technology & Engineering Education

This degree prepares individuals to teach general and specialized technology and engineering courses in middle schools and high schools. Many courses are part of a schools' overall STEM—Science, Technology, Engineering & Math program. Courses often serve as a feeder for specialized CTE tech school programs as well as preparation for college programs.



See: Department of Technology and Workforce Learning –Technology & Engineering Education-

<https://www.pittstate.edu/twl/technology-and-engineering-education.html>

Contact: Dr. Andy Klenke, TWL Chairman,
620-235 4372

aklenke@pittstate.edu

Other On-Campus Degree Option: BSCTE

You have a technology-related associate degree and you want to teach. Consider:

BS in Career and Technical Education (BSCTE)



This degree prepares individuals who have completed two-year technician programs and gained work experience in a technical field or trade that want to prepare students for gainful employment. This is an alternative education program. Courses are offered on-campus, off-campus, and online, but not exclusively online or on-campus.

FMI, See: Department of Technology and Workforce Learning –Career and Technical Education-

<https://academics.pittstate.edu/academic-programs/technology-and-workforce-learning/career-and-technical-technical-education-degree.html>

Contact: Dr. Andy Klenke, TWL Chairman,

620-235 4372

aklenke@pittstate.edu

What All Transfers Need to Know



College of Technology
Contact Information:

College of Technology
Pittsburg State University
1701 S. Broadway
Pittsburg, KS 66762

Phone: 620-235-4365

For More Information—See: <https://technology.pittstate.edu/index.html>
(*College of Technology Website*)



Kansas Technology Center