



Piano/Guitar

10. Thriving From A Riff



PLAY 9 CHORUSES (♩ = 256)

By Charlie Parker

A B♭Δ G7b9 C-7 F7 D-7 G7b9 C-7 F7

B♭7 Eb7 E°7 1. D-7 G7b9 C-7 F7

B BRIDGE 2. B♭7 B♭7 D7 D7

G7 G7 C7 C7

C F7 F7 B♭Δ G7b9 C-7 F7 D-7 G7b9

C-7 F7 B♭7 Eb7 E°7 B♭7 B♭7

SOLOS

B♭Δ G7b9 C-7 F7 D-7 G7b9 C-7 F7 B♭7

E♭7 E°7 1. D-7 G7b9 C-7 F7 2. B♭7 B♭7

D7 G7 C7 F7

B♭Δ G7b9 C-7 F7 D-7 G7b9 C-7 F7 B♭7 Eb7 E°7 B♭7 B♭7

Fine

BASS

10. Thriving From A Riff

By Charlie Parker

PLAY 9 CHORUSES (♩ = 256)

A B \flat Δ G7 \flat 9 C-7 F7 D-7 G7 \flat 9 C-7 F7

1. B \flat 7 E \flat 7 E \circ 7 D-7 G7 \flat 9 C-7 F7

B BRIDGE 2. B \flat 7 B \flat 7 D7 D7

G7 G7 C7 C7

C F7 F7 B \flat Δ G7 \flat 9 C-7 F7 D-7 G7 \flat 9

C-7 F7 B \flat 7 E \flat 7 E \circ 7 B \flat 7 B \flat 7

SOLOS

B \flat Δ G7 \flat 9 C-7 F7 D-7 G7 \flat 9 C-7 F7 B \flat 7

1. E \flat 7 E \circ 7 D-7 G7 \flat 9 C-7 F7 2. B \flat 7 B \flat 7

D7 G7 C7 F7

B \flat Δ G7 \flat 9 C-7 F7 D-7 G7 \flat 9 C-7 F7 B \flat 7 E \flat 7 E \circ 7 B \flat 7 B \flat 7

Fine

Jazz Alto Sax / Bari Sax Addition

E \flat

10. Thriving From A Riff

E \flat

PLAY 9 CHORUSES (♩ = 256)

By Charlie Parker

The main musical score is written in 4/4 time with a key signature of one sharp (F#). It consists of several staves of music with various chord markings and performance instructions. The first staff is marked with a box 'A' and contains chords GA, E7 \flat 9, A-7, D7, B-7, E7 \flat 9, A-7, and D7. The second staff continues with G7, C7, C \sharp 7, and then a first ending marked '1.' with chords B-7, E7 \flat 9, A-7, and D7. The third staff is marked '2.' and contains G7, G7, and a section marked 'B BRIDGE' with chords B7 and B7. The fourth staff continues with E7, E7, A7, and A7 with a triplet '3'. The fifth staff is marked 'C' and contains D7, D7, GA, E7 \flat 9, A-7, D7, B-7, and E7 \flat 9. The sixth staff contains A-7, D7, G7, C7, C \sharp 7, G7, and G7 with a triplet '3'.

SOLOS

The solo section consists of five staves of empty musical notation with chord progressions written above them. The first staff has chords GA, E7 \flat 9, A-7, D7, B-7, E7 \flat 9, A-7, D7, and G7. The second staff has a first ending '1.' with chords C7, C \sharp 7, B-7, E7 \flat 9, A-7, and D7, and a second ending '2.' with chords G7 and G7. The third staff has chords B7, E7, A7, and D7, with a percentage symbol (%) in each measure. The fourth staff has chords GA, E7 \flat 9, A-7, D7, B-7, E7 \flat 9, A-7, D7, G7, C7, C \sharp 7, G7, and G7. The fifth staff is empty.

Fine

Copyright © 1945 Atlantic Music Corp. © 1976 Atlantic Music Corp.
Used by permission. International Copyright Secured. Made in U.S.A. All Rights Reserved.

Jazz Tenor Sax Audition

B \flat

10. Thriving From A Riff

B \flat

By Charlie Parker

PLAY 9 CHORUSES (♩ = 256)

A CA A7 \flat 9 D-7 G7 E-7 A7 \flat 9 D-7 G7

C7 F7 F \sharp 7 1. E-7 A7 \flat 9 D-7 G7

B BRIDGE 2. C7 C7 E7 E7

A7 A7 D7 D7

C G7 G7 CA A7 \flat 9 D-7 G7 E-7 A7 \flat 9

D-7 G7 C7 F7 F \sharp 7 C7 C7

SOLOS

CA A7 \flat 9 D-7 G7 E-7 A7 \flat 9 D-7 G7 C7

1. F7 F \sharp 7 E-7 A7 \flat 9 D-7 G7 2. C7 C7

E7 A7 D7 G7

CA A7 \flat 9 D-7 G7 E-7 A7 \flat 9 D-7 G7 C7 F7 F \sharp 7 C7 C7

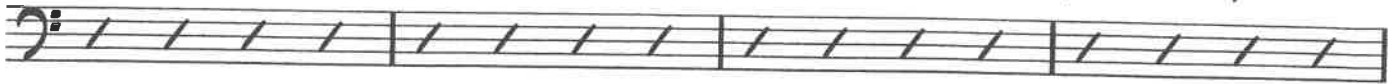
Fine

2 / 12

TROMBONE 1

Levor Trombone

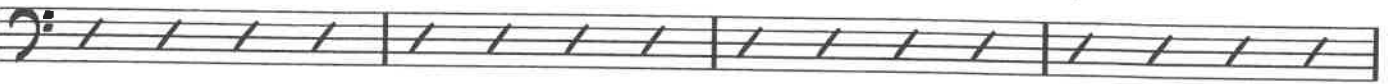
Dmi7 Fmi7 A^bmi7 D^b7 C^{6/9} A^b7 Gmi7 G^b7



F FMA7 G^b7 FMA7 E^b7



D7 Dmi7 G7 D^b7



G C^{6/9} D7



Dmi7 G7 125 C^{6/9} *START* SOLI *SONES/SAGE*



TROMBONE 1

J

ADD SAXES

K

End

L

FP

M

STRAIGHT 8TH

N

SWING SH. wavy

Jazz Tenor Trombone Excerpt
132 BPM. Swing 8th's

UNIS. (w/BASS)

mf

BASS TROMBONE

E

Handwritten musical notation on a bass clef staff, measures 1-4.

F

NO CHRY

Handwritten musical notation on a bass clef staff, measures 5-8.

G

1-32-

6

START

SOLI SONES/BASS

Handwritten musical notation on a bass clef staff, measures 9-12.

H

Handwritten musical notation on a bass clef staff, measures 13-16.

Handwritten musical notation on a bass clef staff, measures 17-20.

I

Handwritten musical notation on a bass clef staff, measures 21-24.

Handwritten musical notation on a bass clef staff, measures 25-28. Includes triplets and the instruction "ADD TRPTS."

J

Handwritten musical notation on a bass clef staff, measures 29-32.

Handwritten musical notation on a bass clef staff, measures 33-36. Includes triplets and the instruction "ADD SAXES".

K

Handwritten musical notation on a bass clef staff, measures 37-40.

Jazz Bass Trombone Excerpt

200 BPM Swing 8th's

H

I

J

K

L

(TENOR) 8

f

ff

Jazz Trumpet Excerpt

200 BPM Swing 8th's

The image shows a musical score for a jazz trumpet excerpt. It consists of four systems of music, each starting with a boxed letter: I, J, K, and L. The music is written in treble clef with a key signature of one flat (B-flat major or D minor). The tempo is 200 BPM and the style is Swing 8th's. The score includes various musical notations such as eighth notes, quarter notes, and rests, along with dynamic markings like *f* and *ff*. There are also accents (^) and slurs over the notes. A bracketed section in the fourth system is labeled "OPT BUA LOWER".

I

f

J

K

ff

OPT BUA LOWER

L

Musical score for Trumpet 3 (Lead) in Fox Hunt, measures 121-161. The score is written in treble clef with a key signature of one sharp (F#). It includes various musical notations such as dynamics (ff), accents (>), slurs, and rests. Measure numbers 121, 129, 137, 145, 153, and 161 are boxed. A handwritten blue annotation 'START' with an arrow points to measure 145. A handwritten blue 'ff' is written below measure 153. The score consists of seven staves of music.