

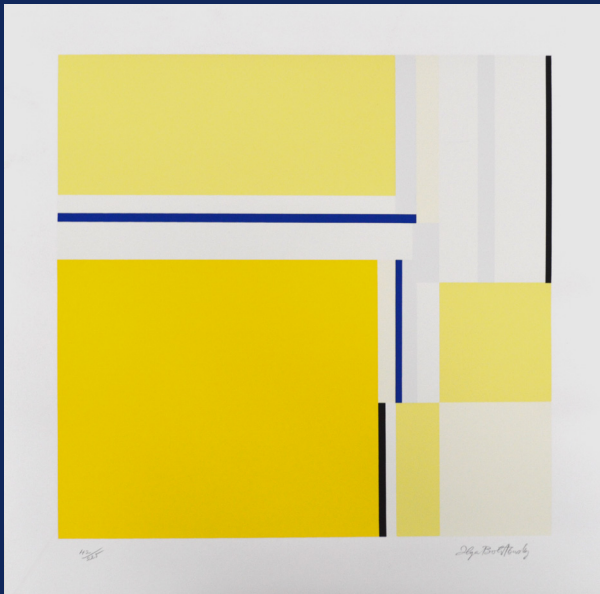
PSU ART

Fall 2016 Exhibitions

Pittsburg State University
Museum
of **Art**

Gail Farnis *Fudge Ripple* 1969

HARRY KRUG GALLERY



Ilya Bolotowsky *Untitled* 1978

Curated by Stella Hastings, Professor of Music at Pittsburg State University, this exhibit explores motion, stillness, and the celebration of the connection of art and music via the Pittsburg State University's Permanent Collection.

Finding curatorial inspiration from jazz legend, Miles Davis, this wonderful exhibition is full of distinct graphic styles, incorporating bright colors and geometric shapes. Miles Davis was also a visual artist and had two bags with him at all times, his trumpet bag and another bag with pens, pencils, pads of paper, etc.

blue brew

EXHIBITION:
September 6 - January 12, 2017

CURATOR'S TALK:
October 20 4:00 - 5:00pm

RECEPTION:
October 20 5:00 - 6:00pm

UNIVERSITY GALLERY

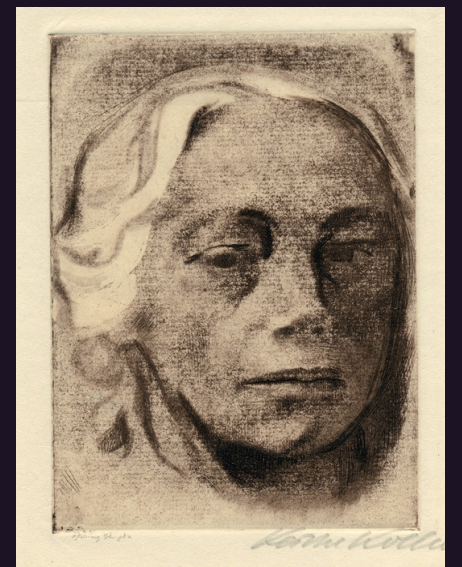
Lasting Impressions

EXHIBITION:
August 30 - December 1, 2016

PRINTMAKING DEMO:
September 7 4:00 - 6:00pm

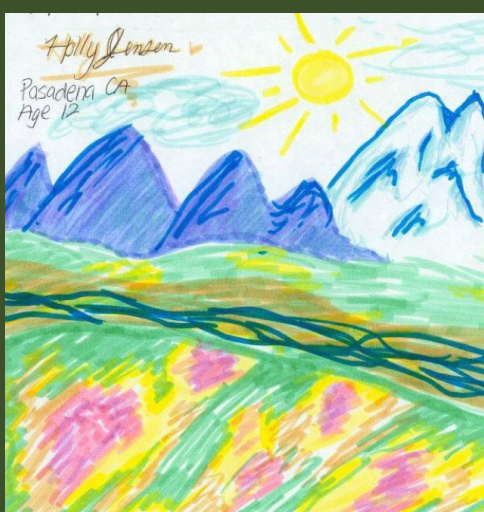
TALK AND RECEPTION:
September 8 4:00 - 5:00pm
5:00 - 6:00pm

The Special Collections and University Archives at Pittsburg State University contain material pertaining primarily to Kansas and the University. The department specializes in printed materials from Southeast Kansas, its culture and inhabitants, and the correspondence, libraries, business files and memorabilia of significant Southeast Kansans. Included are manuscripts, photographs, correspondence, and non-print materials. Art of various mediums, both original and reproductions, are part of the collection as well, and a small representation of these are on loan for the Fall 2016 Exhibit.



Käthe Kollwitz *Self Portrait* 1912

ART CONNECTORS COMMUNITY GALLERY



Enjoy imaginative art work from Pittsburg K-12 students, inspired by The National Parks: America's Best Idea.

Mark your calendars for Family Art Day. This year we will have fun activities centered around our National Parks.

Celebrating the National Parks K-12

EXHIBITION:
September 14 - December 1, 2016

FAMILY ART DAY:
September 24, 2:00 - 4:00pm
Porter Hall



Pittsburg State University Department of Art
1701 S Broadway St., Porter Hall, Pittsburg, KS 66762

www.psumuseumofart.wordpress.com
www.facebook.com/PittsburgMuseumofArt
www.twitter.com/PsuArtmuseum

